

Greater Eastern Jemez Wildland/Urban Interface



Wildland Fire

SMOKE IN THE AIR

Where there is Smoke, there is Fire.

(for the mathematically oriented folk)

- Smoke Postulate

If Smoke, then Fire

- Converse to Smoke Postulate

If Fire, then Smoke

- Bi-conditional Statement of the Smoke Postulate

If and only if there is Smoke, then there is Fire.

Smoke

Fire has occurred in nature since the beginning of time.

- Fire is part of nature's ecosystems
 - required for the maintenance of grasses in prairies
 - required for the maintenance of fire adaptive forests
- “Control of fire” is one of mankind's best achievements
 - Slash and Burn Agriculture
 - Harnessing Fire is a requirement for the Development of Civilization
- We like fire,
 - it is necessary for cooking, heating, transportation
 - it is emotionally satisfying
- We don't like fire, when
 - it intrudes on ourselves and possessions
 - it escapes our 'control'
 - It forces us to breath its by-product of SMOKE

Smoke

How to 'Control' ~~Fire~~:

Manage **Fuels**, **Oxygen** or **Ignition**
At All Times!

Fuels – remove, isolate, mitigate, or ~~burn (consume)~~

Oxygen – Not removable or isolatable from this system

Ignition – 100+ years of removing Ignition has lead to current fuel levels as vegetation continues to grow.

A ponderosa pine stand in the Bitterroot National Forest in Montana. Increased vegetation density is attributed to fire prevention efforts since 1895.

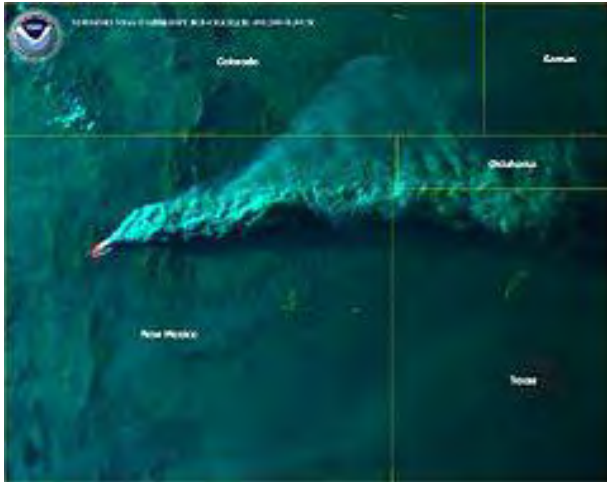
1909

1948

1989



Ignition is Everywhere, and Smoke is in the Air.



Cerro Grande Fire of May 11th, 2000

NOAA picture

- Fire adjacent to the town of Los Alamos
- Catastrophic event > 350 homes lost
- Multiple states impacted by smoke



Las Conchas Fire of June 26th, 2011

Space Station Picture, printerest.com

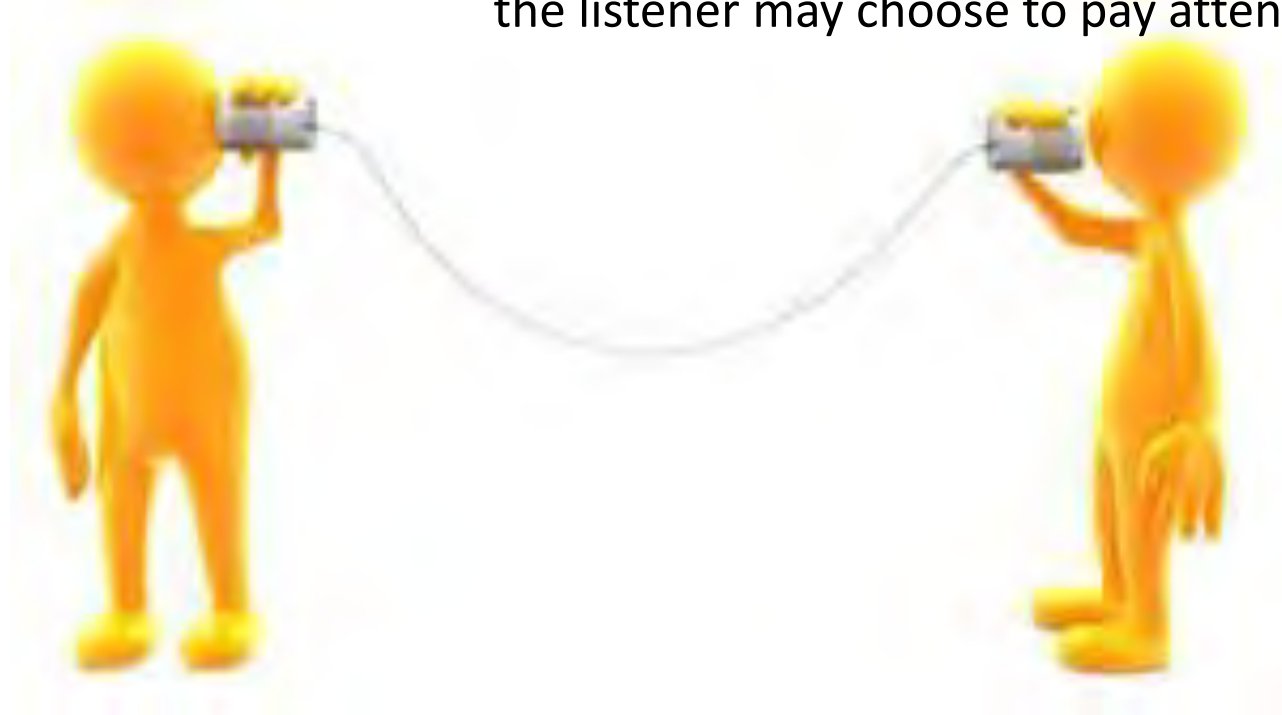
- Fire adjacent to the town of Los Alamos – 11 years later.
- Catastrophic event – No homes lost in Los Alamos, Cochiti Mesa all but handful of structures destroyed.
- Multiple states impacted by smoke

The Partnership of Communication

Someone states a message – someone else listens

If the message is **False, Mistaken or a Lie**,
the listener stops listening.

If the message is **True and Pertinent**,
the listener may choose to pay attention.



Smoke

What ~~Fire~~ is not:

- Unpredictable
- The result of global warming
- Excludable from the environment
- Controlled by higher insurance premiums

Air Quality Bureau

The mission of the New Mexico Environment Department's Air Quality Bureau (AQB) is to **protect** the inhabitants and natural beauty of New Mexico by **preventing** the deterioration of air quality.

Public 'hears' that the Bureau intends to **protect** and **prevent** – or control air quality.

➤ We all wish this to be true...If wishes were horses, beggars would ride.

- Those that are personally concerned with 'Air Quality' for their own health, observe when the Bureau **fails to protect and prevent**, and interpret this as a **betrayal**.

Betrayed people are angry, strident, and vindictive.

- Those that are not as concerned with 'Air Quality', observe when the Bureau **fails to protect and prevent**, and at best, stop listening – even if other messages of the Bureau are important...

Ann's Informal Opinion Poll

- Those with health issues in regard to smoke **want prior notification**, so they can take personal action to mitigate the effects of smoke.
- Those without acute health issues, wonder why we allow burning on 'windy days'.
 - Obviously, it hasn't been communicated that some flow of air is desirable to carry smoke away.
- All, to some degree, accept that fire is necessary and so smoke is to be accepted, tolerated and personally mitigated as necessary.

Choices, Choices.



WOOD
PELLETS



Not IF the fuel will burn, but When and How.

Prepare for Smoke

~~Prevent~~ Forest ~~Fire~~

- We may be able to affect the rate of release of smoke (smoke/time), but not total quantity over time.
- We may be able to influence the what type of smoke by-products are produced (complete versus incomplete combustion).
- When communications to the public include even inadvertent false statements, communication fails.
- When agencies insist on promoting patently false statements, the public loses respect for government.
- The concerned public consists of educated, thinking and reasoning individual that will only be persuaded with true and reasoned arguments.
- The unconcerned public doesn't care what you need to communicate and has stopped listening.



Greater Eastern Jemez Wildland/Urban Interface