

A sepia-toned photograph of a forest with tall pine trees. The ground is covered in low-lying vegetation and small trees. A person is visible in the lower-left corner, standing near a tree. The overall tone is warm and historical.

The good, the bad and the smoky: A Sitgreaves Fire Case Study

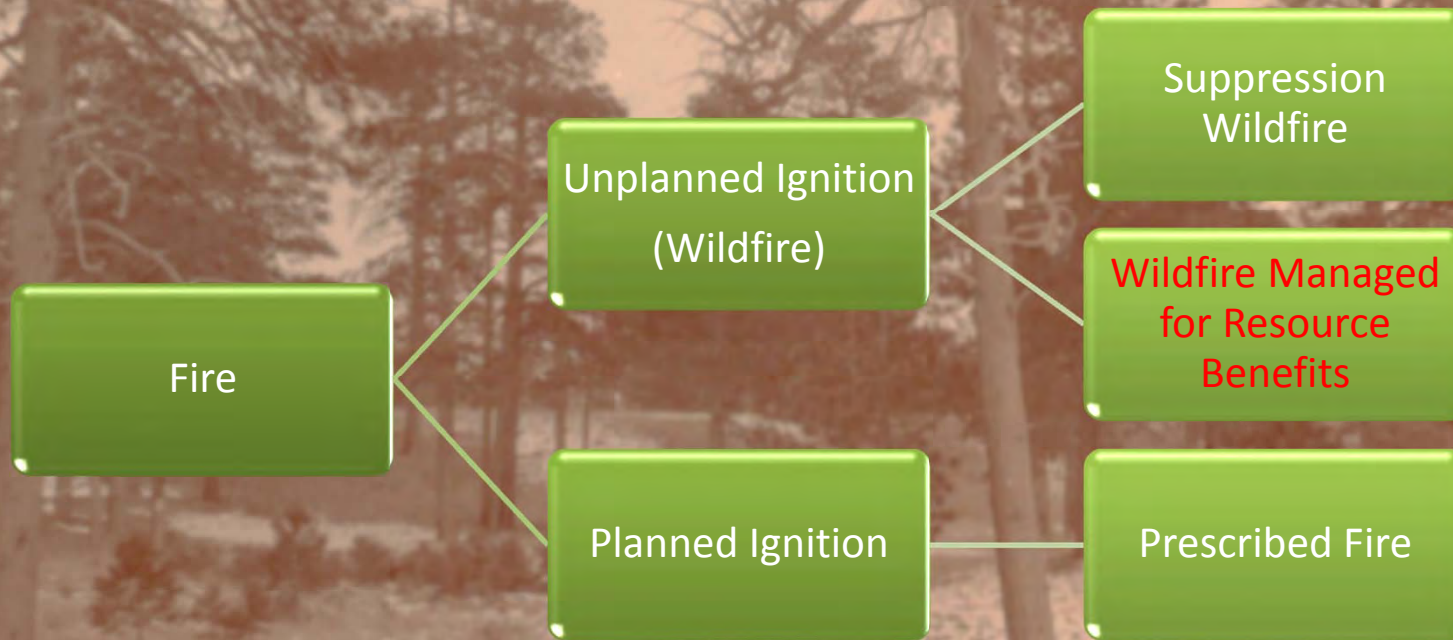
Vic Morfin

Coconino NF Forest Fuels Specialist

ICT3 on Sitgreaves Fire

Sitgreaves Fire

Wildfire Managed for Resource Objectives



A sepia-toned photograph of a forest. The scene is dominated by tall, slender pine trees. In the lower-left foreground, a person is visible, standing near a tree trunk. The ground is covered with low-lying vegetation and small trees. The overall atmosphere is quiet and somewhat somber due to the monochromatic color scheme.

Smoke:

An unwanted necessary
by-product of fire

The premium we pay for an insurance policy?



North

VIEW: West to East

Initial thoughts of the Pumpkin Fire
Fire Complexity driven by smoke
mgmt

Proximity to I-40

No road system on mountain

Heavy fuel loads = heavy smoke

Primarily Ponderosa Pine

~11,000 acres

7,000' to +9,000' Elevation

2010 **Eagle Rock Fire** (High
Intensity)

Monsoonal Pattern, ~4" pct to date

VIEW: South to North

CHRONOLOGY:

Duck Fire Start: 7/7

Inter-Disciplinary Team Assembled:

Sitgreaves Fire Start: 7/14

This changes everything, clear Point of No Return (FS 63 Road)

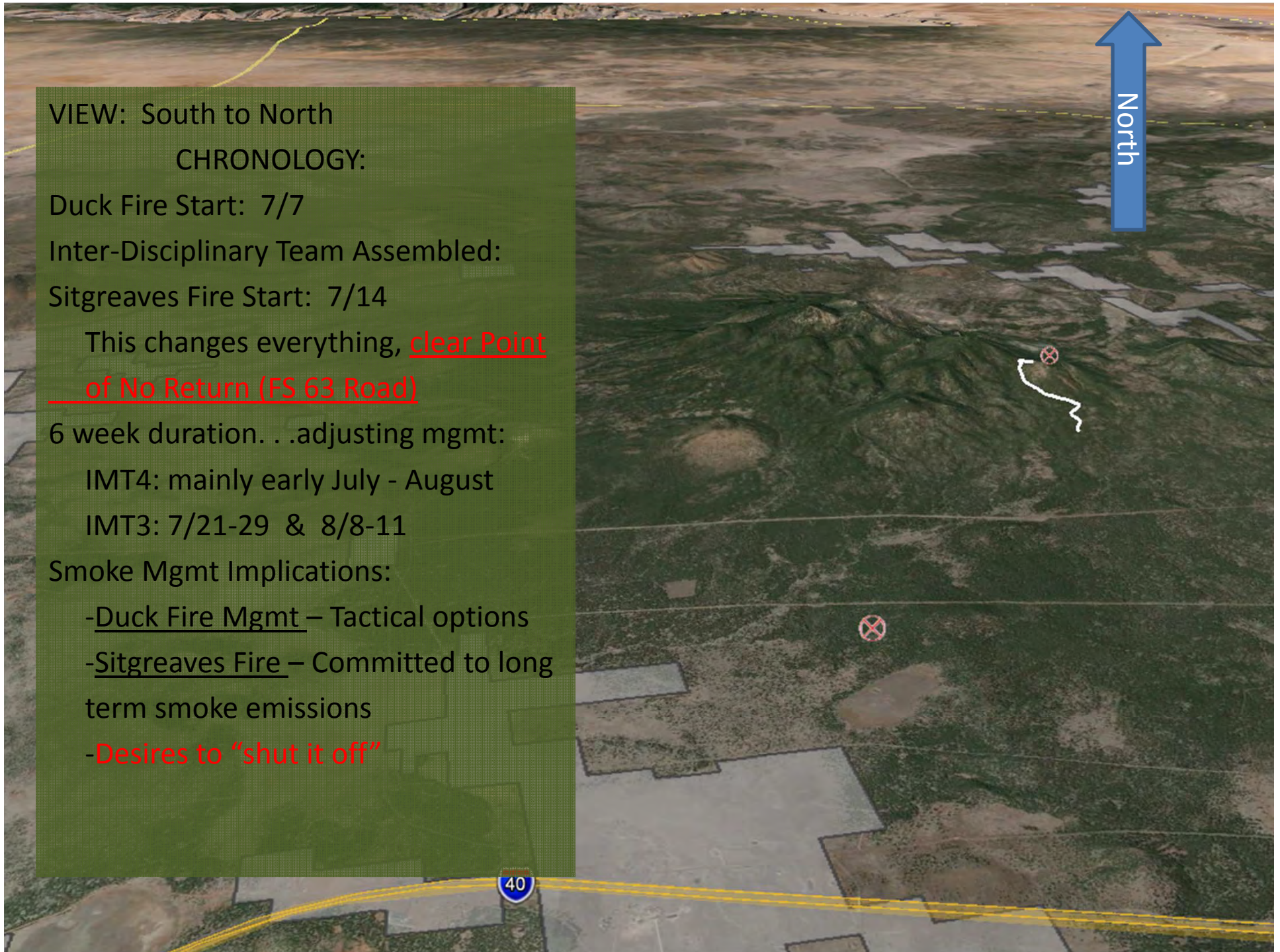
6 week duration. . .adjusting mgmt:

IMT4: mainly early July - August

IMT3: 7/21-29 & 8/8-11

Smoke Mgmt Implications:

- Duck Fire Mgmt – Tactical options
- Sitgreaves Fire – Committed to long term smoke emissions
- Desires to “shut it off”





VIEW: NorthWest to Southeast

Planning Area- Roads, ~19,000 acres

Smoke Receptors:

I-40 Corridor communities:

- Flagstaff
- Bellemont
- Parks
- Williams

I-40 (traffic)

Hwy 180 (traffic)

Hwy 64 (traffic)

Verde Valley? If North wind event

Adjacent local residences

Consider **Eagle Rock Fire's** impact to local public perception- their images of fire running toward their houses.

Sitgreaves Fire, 1st 3 weeks of July

Monsoons just started- wet, cool & cloudy

Non Threatening

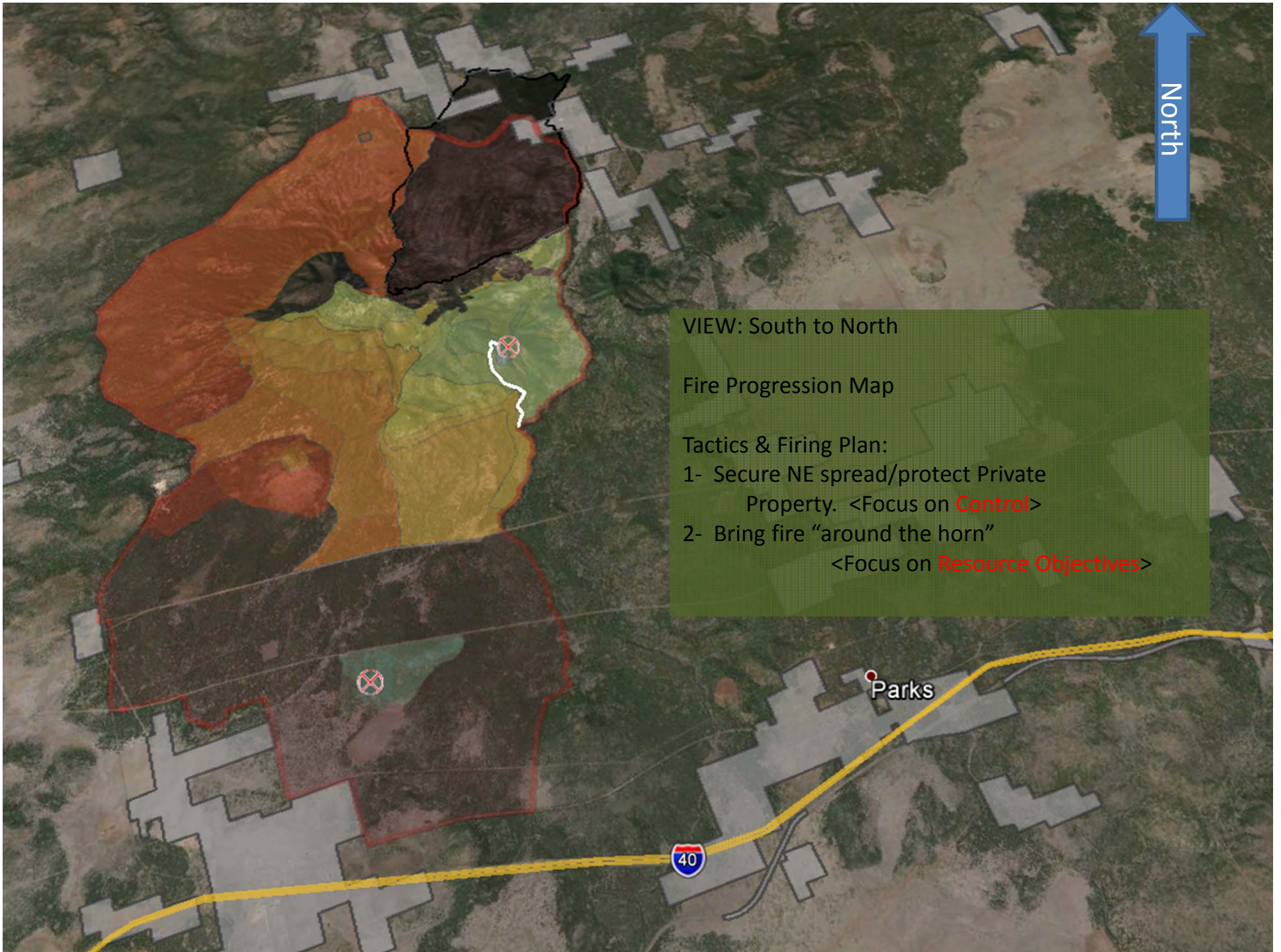
- Fire & Smoke Management Challenges?
 - Painting the reality picture (Internal & External) for the future. Being transparent about the **future**
 - E.g.- IDTs, Stakeholders & Public Meetings
 - The sooner, the better



Sitgreaves Fire, 2-3 days later

View from I-40 and City of Williams

- What are those guys doing?
- Leave it alone vs. active management
 - **Risk management** & reducing exposure (smoke, FF injuries, escaped fire, public safety. . .)
 - Fire effects- keeping it out of alignment.
- **Accelerated mass ignition** (while meeting objectives)
 - Reducing duration & taking advantage of very good to excellent ventilation days.



North

VIEW: South to North

Fire Progression Map

Tactics & Firing Plan:

- 1- Secure NE spread/protect Private Property. <Focus on **Control**>
- 2- Bring fire "around the horn"
<Focus on **Resource Objectives**>

Parks

40



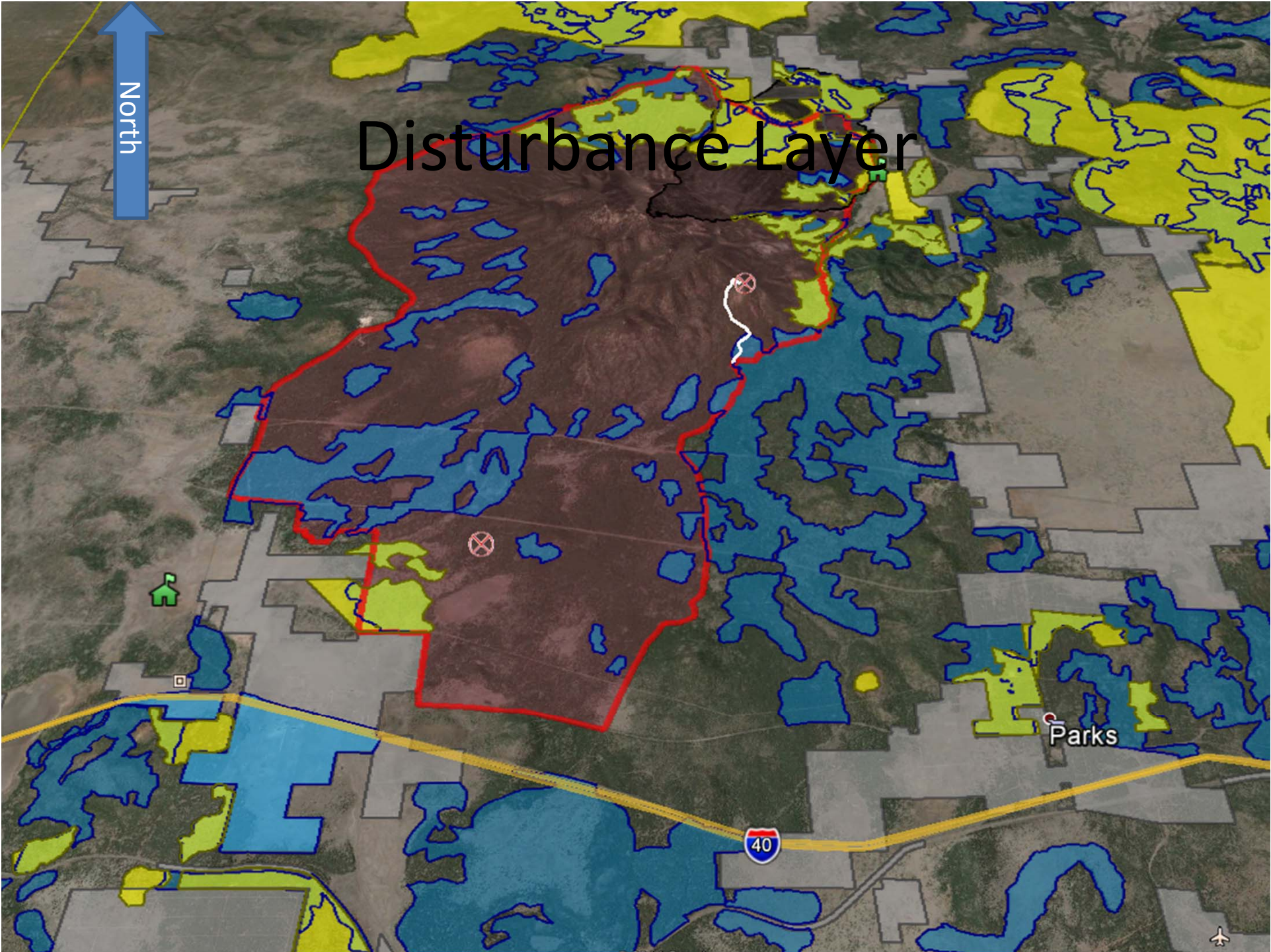
The End

Thanks to Holly Krake, Williams R.D. FIO

Vic Morfin

(928) 527-3557

vmorfin@fs.fed.us



Disturbance Layer

North

Parks

40

Past, present & future

North

Bellemont

Parks

Sitgreaves Mountain

Kendrick Mountain

Bill Williams Mou

Williams

64

40