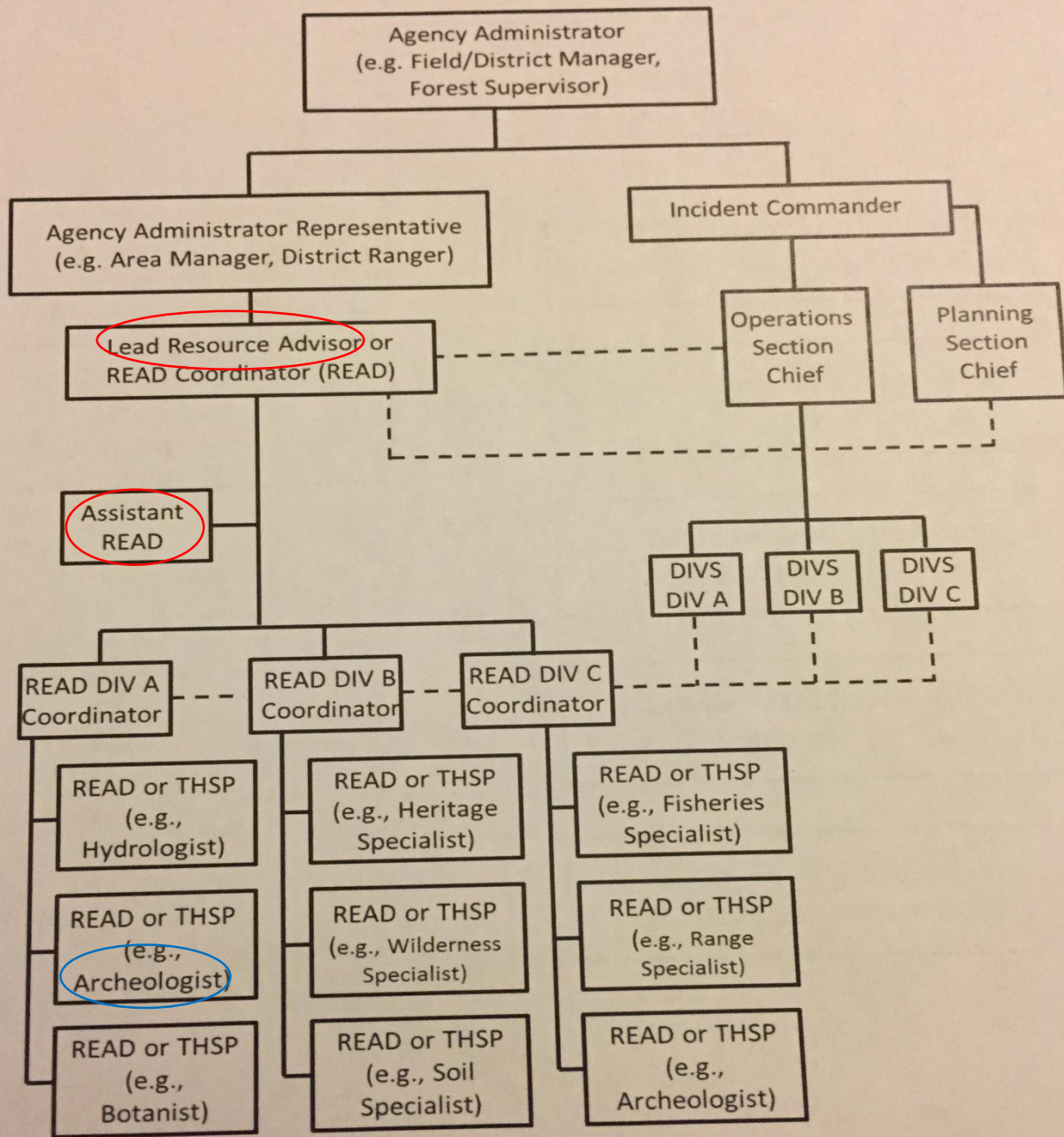
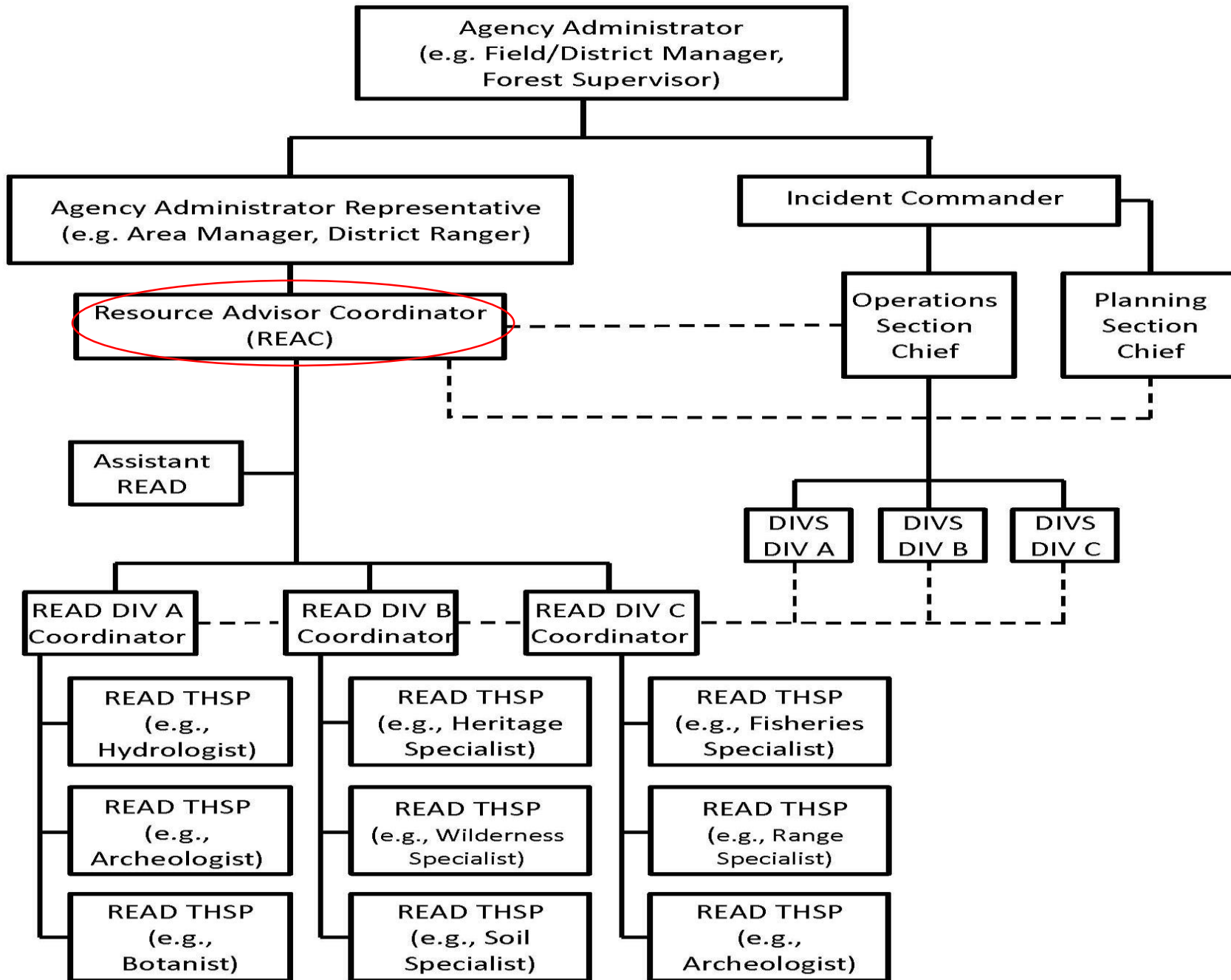


Figure 4: Incident Command Structure



*THSP: Technical Specialist.

*DIVS: Division/Group Supervisor



A publication of the
National Wildfire
Coordinating Group



National Incident Management System: Wildland Fire Qualification System Guide

PMS 310-1

October 2017



FEDERAL WILDLAND FIRE QUALIFICATIONS SUPPLEMENT

January 2018

ARCHAEOLOGIST (ARCH)

AGENCY ENDORSEMENTS:

REQUIRED TRAINING:

National Incident Management System, An Introduction (IS-700) Introduction to ICS (ICS-100)

REQUIRED EXPERIENCE:

Must have performed as a specialist on a unit in this function

PHYSICAL FITNESS LEVEL:

None

THESE POSITIONS MAINTAIN CURRENCY FOR ARCH:

None

ARCH MAINTAINS CURRENCY FOR THESE POSITIONS:

None

ADDITIONAL TRAINING WHICH SUPPORTS DEVELOPMENT OF KNOWLEDGE AND SKILLS:

None

*If visits to the fireline/prescribed burn are required to perform assigned duties, all ARCHs must meet the requirements for non-escorted visits or be escorted by a qualified individual per the requirements contained in the [Interagency Standards for Fire and Fire Aviation Operations Guide](https://www.nifc.gov/policies/pol_ref_redbook.html) (https://www.nifc.gov/policies/pol_ref_redbook.html), Chapter 7.

CULTURAL SPECIALIST (CULS)

AGENCY ENDORSEMENTS:

REQUIRED TRAINING:

National Incident Management System, An Introduction (IS-700) Introduction to ICS (ICS-100)

REQUIRED EXPERIENCE:

None

PHYSICAL FITNESS LEVEL:

None

THESE POSITIONS MAINTAIN CURRENCY FOR CULS:

None

CULS MAINTAINS CURRENCY FOR THESE POSITIONS:

None

ADDITIONAL TRAINING WHICH SUPPORTS DEVELOPMENT OF KNOWLEDGE AND SKILLS:

None

AGENCY-SPECIFIC REQUIREMENTS

USFS

PHYSICAL FITNESS LEVEL:

Light

RESOURCE ADVISOR (READ)

AGENCY ENDORSEMENTS:

REQUIRED TRAINING:

National Incident Management System, An Introduction (IS-700) Introduction to ICS (ICS-100)

Resource Advisor (N-9042)

REQUIRED EXPERIENCE:

None

PHYSICAL FITNESS LEVEL:

None

THESE POSITIONS MAINTAIN CURRENCY FOR READ:

Resource Advisor, Fireline (REAF)

READ MAINTAINS CURRENCY FOR THESE POSITIONS:

Resource Advisor, Fireline (REAF)

ADDITIONAL TRAINING WHICH SUPPORTS DEVELOPMENT OF KNOWLEDGE AND SKILLS:

None

AGENCY-SPECIFIC REQUIREMENTS

BLM BIA DOI Learn course can satisfy the N-9042 course requirement

RESOURCE ADVISOR, FIRELINE (REAF)

AGENCY ENDORSEMENTS:

REQUIRED TRAINING:

National Incident Management System, An Introduction (IS-700) Introduction to ICS (ICS-100)
Basic ICS: ICS for Single Resources and Initial Action Incidents (ICS-200) Firefighter Training (S-130)
Introduction to Wildland Fire Behavior (S-190) Human Factors in the Wildland Fire Service (L-180)
Annual Fireline Safety Refresher (RT-130)
Resource Advisor (N-9042)

REQUIRED EXPERIENCE:

None

PHYSICAL FITNESS LEVEL:

Moderate

THESE POSITIONS MAINTAIN CURRENCY FOR REAF:

Resource Advisor (READ)

REAF MAINTAINS CURRENCY FOR THESE POSITIONS:

Resource Advisor (READ)

ADDITIONAL TRAINING WHICH SUPPORTS DEVELOPMENT OF KNOWLEDGE AND SKILLS:

None