



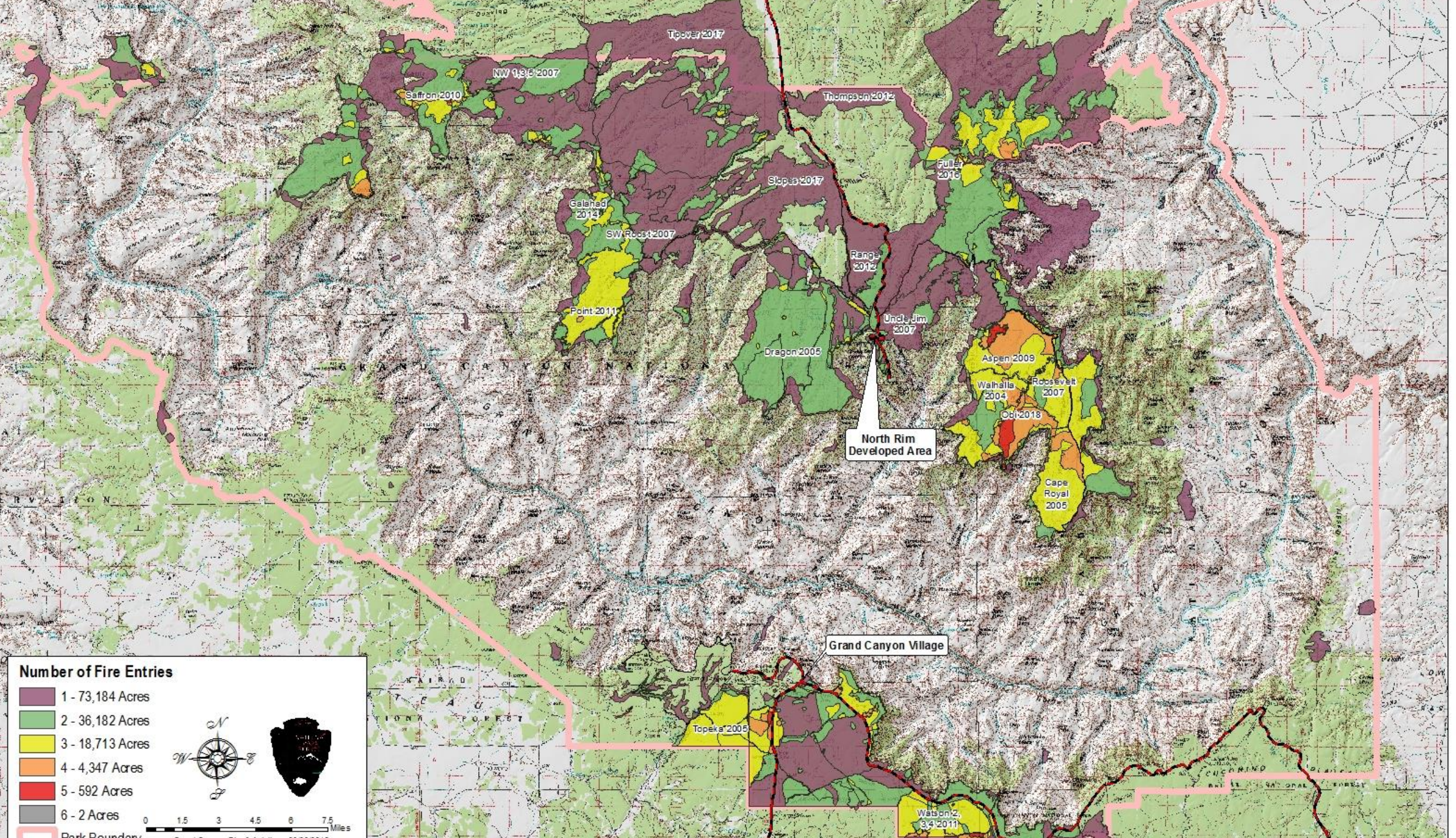
Fire & Archaeology: A Partnership In A Fire Adapted Landscape.

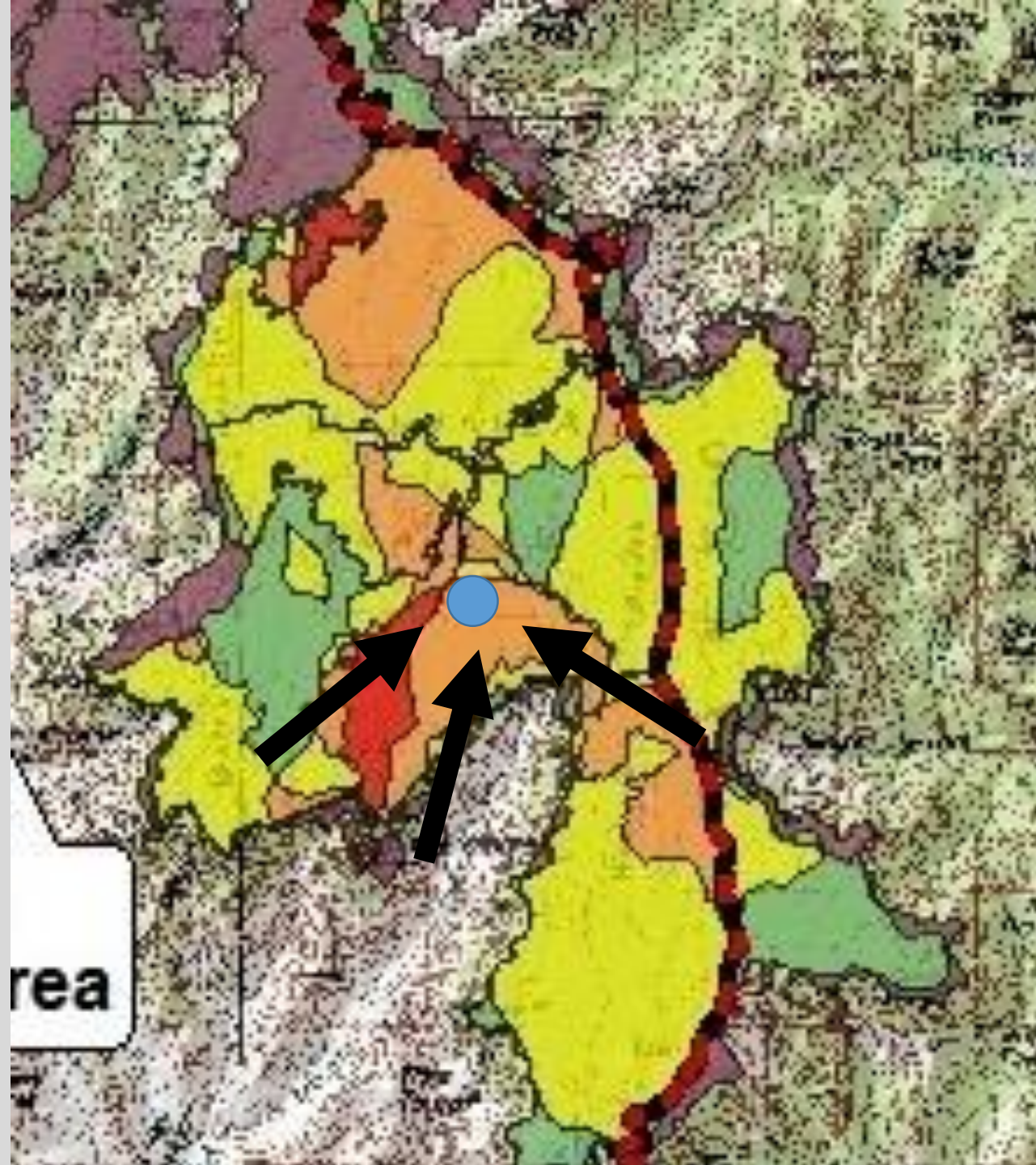
Grand Canyon National Park

Ellen Brennen – Archaeology

Chris Marks – Fire Management

EXPERIENCE YOUR AMERICA





Fire/Aviation, Science/Resource Management, & OPAC Pre-Season Meeting

CY 2018 Accomplished Projects

CY2019 Planned Projects

Fire Severity Monitoring Update (Last Year's Fires)

READ Refresher Class (Dates and Requirements)

Firefighter Physicals for 2017

Planned Cultural Survey Work for CY 2018

Update on Bison Implementation Plan

Planned MSO Survey work for CY 2018

Compliance Update

REAF/READ Use



ARCHAEOLOGIST (ARCH)

AGENCY ENDORSEMENTS:



REQUIRED TRAINING:

National Incident Management System, An Introduction (IS-700)
Introduction to ICS (ICS-100)

REQUIRED EXPERIENCE:

Must have performed as a specialist on a unit in this function

PHYSICAL FITNESS LEVEL:

None

RESOURCE ADVISOR (READ)

AGENCY ENDORSEMENTS:



REQUIRED TRAINING:

National Incident Management System, An Introduction (IS-700)
Introduction to ICS (ICS-100)
Resource Advisor (N-9042)

REQUIRED EXPERIENCE:

None

PHYSICAL FITNESS LEVEL:

None

CULTURAL SPECIALIST (CULS)

AGENCY ENDORSEMENTS:



REQUIRED TRAINING:

National Incident Management System, An Introduction (IS-700)
Introduction to ICS (ICS-100)

REQUIRED EXPERIENCE:

None

PHYSICAL FITNESS LEVEL:

None

RESOURCE ADVISOR, FIRELINE (REAF)

AGENCY ENDORSEMENTS:



REQUIRED TRAINING:

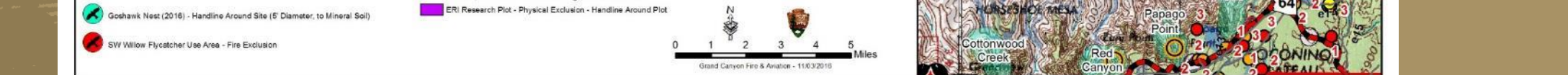
National Incident Management System, An Introduction (IS-700)
Introduction to ICS (ICS-100)
Basic ICS: ICS for Single Resources and Initial Action Incidents (ICS-200)
Firefighter Training (S-130)
Introduction to Wildland Fire Behavior (S-190)
Human Factors in the Wildland Fire Service (L-180)
Annual Fireline Safety Refresher (RT-130)
Resource Advisor (N-9042)

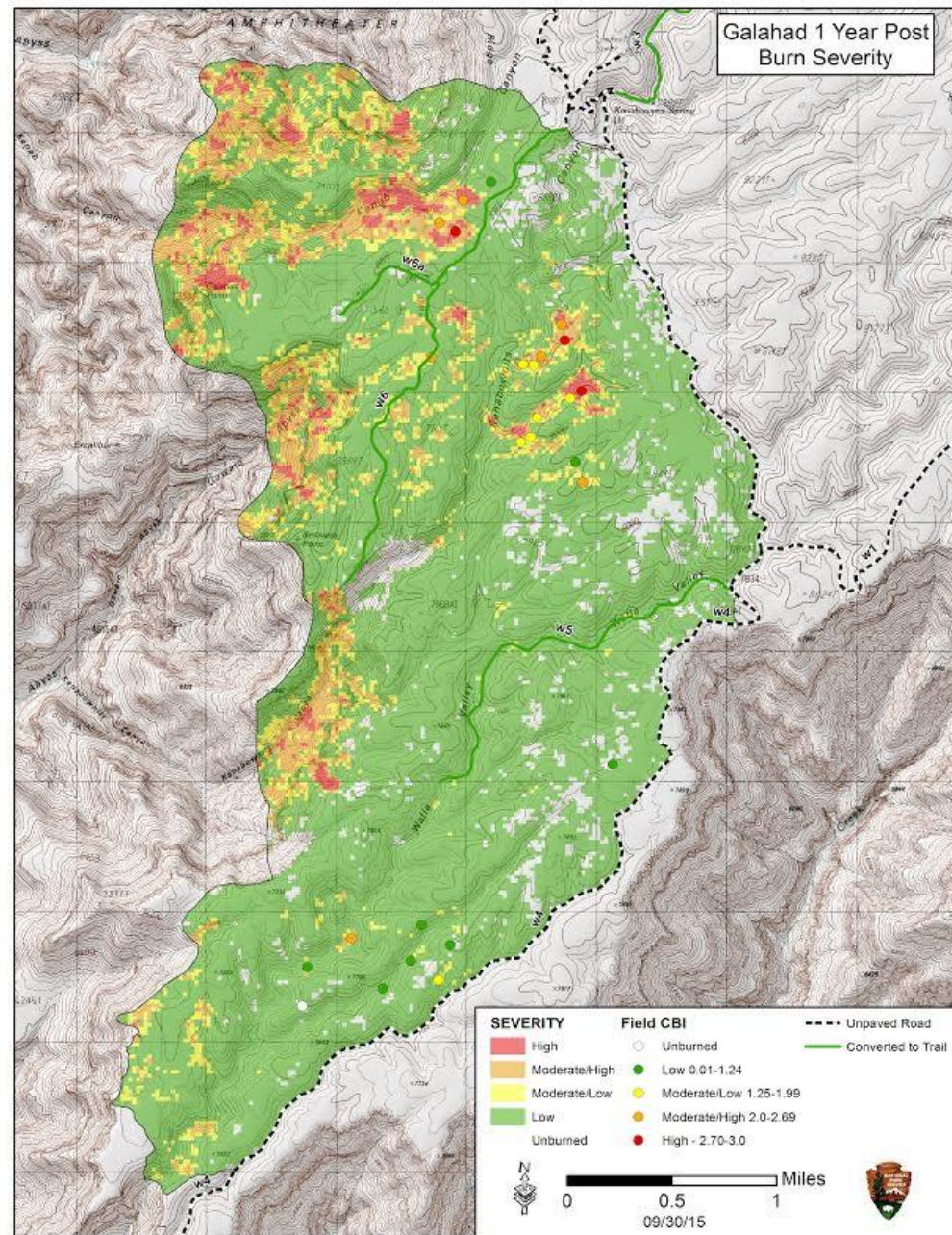
REQUIRED EXPERIENCE:

None

PHYSICAL FITNESS LEVEL:

Moderate





**CULTURAL RESOURCES PRE-SEASON FIRE REPORT
FOR CALENDAR YEAR 2011: AN ASSESSMENT OF PLANNED
FIRE ACTIVITIES**



**Project Number GRCA-2011-B
Archeological Report Number 2011-2-GRCA**

April 2011

**Ellen Brennan
Cultural Resource Program Manager
Grand Canyon National Park**

**For Official Use Only
Disclosure of Archaeological Site Locations Prohibited**

**CULTURAL RESOURCES POST-SEASON FIRE REPORT
FOR CALENDAR YEAR 2011**

**Project Number GRCA-2011-N
Archeological Report Number 2011-14-GRCA**



**Ellen Brennan and Jeremy Pribyl
Cultural Resource Program
Grand Canyon National Park**

**For Official Use Only
Disclosure of Archaeological Site Locations Prohibited**



National Park Service
Grand Canyon National Park
Science and Resource Management

Resource Advisors Pocket Guide



2018

Wildfire Planning Areas
Grand Canyon National Park

