

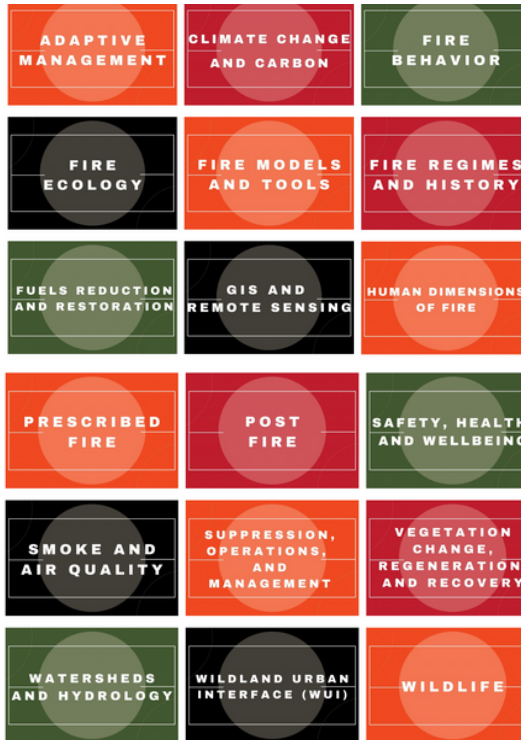
# New Employee Resources

## SUMMARY

Do your employees need extra training in wildland fire from the professionals? Or are you just starting a new position in wildfire and feel you need more background information to succeed? The SWFSC is here to help!

We have compiled a reference sheet that bolsters an understanding of the nuances of wildfire science and communication in the Southwest. With materials that include everything from an introduction to wildfire and climate science, to explanations of modern tribal or agency relations and collaborations, there is something for everyone looking to continue their education and stay up to date on wildfire science in the Southwest.

Check out the [LEARN](#) page on our website to explore various topics related to wildland fire.



**"When I on-board new employees, I send them to watch SWFSC webinars."**  
*-Mary Stuever, District Forester, NM State Forestry*

## STAY CONNECTED!



SW Fire  
E-News



Visit our  
Website



## Science Synthesis

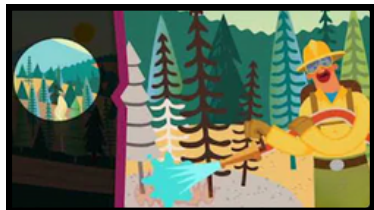
We assemble the latest science into digestible summaries. Check out the latest on our [Science Synthesis](#) webpage!



# Fire Ecology 101



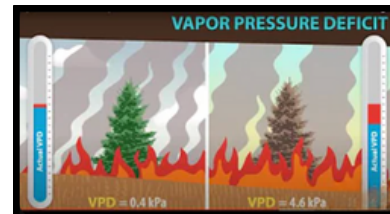
If you feel that your knowledge and understanding of fire ecology is not as robust as it could be, then the [World of Wildland Fire YouTube channel](#) is for you! This resource is focused on providing informative, bite-sized videos beginning with the basics like the fire behavior triangle and ramping up to more in-depth topics such as fire modeling and fire weather. Below are some great videos to get you started!



**Introduction to Wildland Fuel Management**



**Fire Regimes**



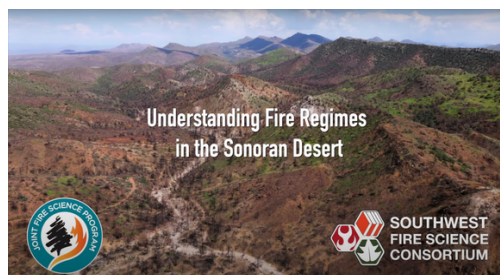
**Temperature and Moisture Relationships**

## WEBINARS & EDUCATIONAL VIDEOS

Monthly webinars cover the latest in scientific advancements relevant to managers. Here are a few recent examples:

- 10 common questions about EuroAmerican forest suppression and climate adaptation answered
- Vegetation Type Conversion: How are the effects of climate change, human land-use, and wildland fire regimes changing one type of ecosystem to another?
- Reserved Treaty Land Rights: A success story from New Mexico on how government fire professionals connected with Indigenous communities to restore cultural wildfire stewardship.

Want to learn more about specific ecosystems and their relationship with wildfire? How about management on past wildfires in the Southwest? Our [Southwest Fire Stories](#) are short documentary videos on a variety of topics that will expand your understanding of wildfire in the Southwest.



### Don't know where to start?

Check out our video on [Fire Regimes in the Sonoran Desert](#) where experts explain how wildfire has changed in this unique ecosystem in part due to the invasion of non-native grasses.



Visit our YouTube [@SWFireScience](#)



### Want to understand how patches of treated land can reduce risk of severe wildfire?

Watch our series of case study videos:

- The evolution of fire management and the role of knowledge
- Goodnight, Midnight
- Good fire and active forest management protects watersheds and communities:

The 2020 Medio Fire

### Check out our social media!



[@SWfirescience](#)



[@swfirescienceconsortium](#)



[@SouthwestFireScienceConsortium](#)

The **Arizona Wildfire Initiative (AZWI)** at Northern Arizona University's School of Forestry supports Arizona's wildland fire needs by enhancing workforce development and education, communicating science, and increasing resilience to Arizona's communities. The AZWI is funded by the state of Arizona.

The **Southwest Fire Science Consortium (SWFSC)** gets emerging science on the ground by connecting scientists, land managers, and the public. By facilitating these connections, the SWFSC helps to assure that scientists are addressing the most pressing questions and managers are applying cutting-edge science and diverse knowledge in their efforts to protect communities and natural resources. The SWFSC is funded by the Joint Fire Science Program.